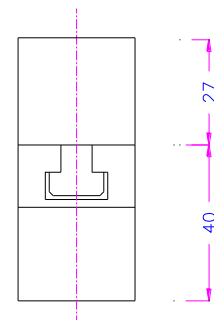
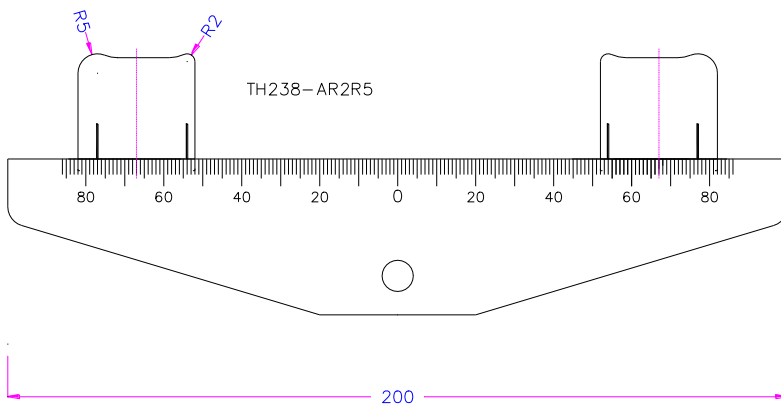
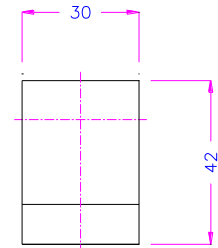
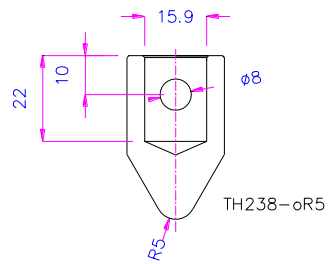


# TH238

small bending fixture for universal usage

Aluminum and steel versions available  
With Adapter Af15.9 and Af20



Item number	Description	Picture
TH238-AR-OR	<p>Simple 3-point bending fixture Bar 200 mm</p> <p>Upper part: anvil TH238-OR. R0.5, 1, 1.5, 2, 3, 3.2, 4, 5, 10 mm 0.16 kg</p> <p>Lower part: – 2 supports with double radius. TH238-AR1.5+R2.5; R2+R3; R2+R5; R3.2+R5; R4+R5 mm 0.8 kg or 2 supports with 1 radius TH238-CR0.5, 1, 1.5, 2, 2.5, 3, 3.2, 3.5, 4, 5, 10 mm</p>	
TH238-4p-AR-CR	<p>4-point bending fixture Lower parts like 3P version</p> <p>Upper supports available with Radius 0.5, R1, R1.5, R2, R2.5, R3, R3.2, R3.5, R4, R5, R10, R15</p>	
TH238+Cx+oX +D8x30	<p>3-point bending fixture with exchangeable rollers Bar 200 mm</p> <p>Upper support Type oX Lower supports Type cX</p>	
TH238- 4p+AX+CX+8x30 +5x30	<p>4-point bending fixture with exchangeable rollers Bars 200 mm</p> <p>Upper support Type CX Lower supports Type AX</p>	
TH238- 4p+CW+CWx+D5 x30	<p>4-point bending fixture with exchangeable rollers Bars 200 mm</p> <p>Upper support Type CWX movable Lower supports Type CWX movable</p>	

TH238-..-WDF-  
CWN5

Upper part of a 4-P fixture  
With and extra articulation adapter  
WDF



TH238+AX+D6x1  
00

4-point bending fixture  
with exchangeable rollers  
Bars 200 mm

Rollers:  $\varnothing$  6 x 100 mm



TH238-300-B300  
+ CW +CWX  
+D4x30

4-point bending fixture  
with exchangeable rollers  
Bars 300 mm

Movable carrier

Rollers:  $\varnothing$  4 mm






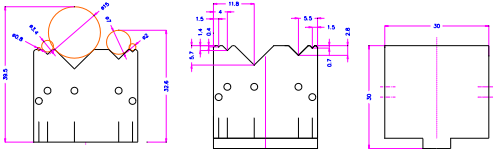

Upper/lower part: 3.0 kg each



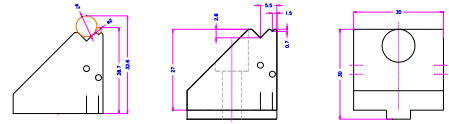
TH238+CW+CWE  
R2-VS6

Moveable support 6 mm moved from  
center Radius 2 mm



Item number	Description	Qt.	Picture
<i>Bars</i>			
TH238-B200	Lower bar, aluminum, anodized, 200 mm. Possible span distances 0-144 mm, 0-150 mm, 0-196 mm. Weight 0.4 kg.	1x	
TH238-B200-St	Lower bar, steel, 200 mm. Possible span distances 0-144 mm, 0-150 mm, 0-196 mm. Weight 1.2 kg.	1x	
TH238-B300-St	Lower bar steel, 300 mm, 2.6 kg	1x	
TH238-B350-St	Lower bar steel, 350 mm, 2.8 kg	1x	
TH238-B400-St	Lower bar steel, 400 mm, 3.2 kg	1x	
TH238-B430-St	Lower bar steel, 430 mm, 5.2 kg	1x	
<i>Supports lower anvils</i>			
TH238-AR	Supports with 2 milled radii Hardened steel  Available R1.5+R2.5; R2+R3; R2+R5; R3.2+R5; R4+R5 mm  0.2 kg	2x	
TH238-CR	Supports with 1 milled radius  R: 0.5; 1; 1.5; 2; 2.5; 3.2; 5 mm  0.1 - 0.8 kg	2x	
TH238-CR..H..	Special supports with 1 milled radius  E.g. radius 1 mm, height 130 mm	2x	
<i>Supports for rollers</i>			
TH238-AX	Supports for exchangeable rollers, 5 pins Rollers: Ø 1 to 15 mm 0.18 kg	2x	  TH238-AX
TH238-AX-H50	But extended Height (no stock part )	2x	

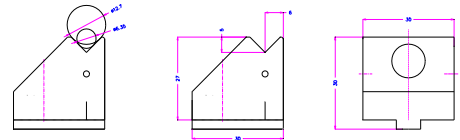
TH238-CX Support for exchangeable rollers, 2 pins  
Rollers:  $\varnothing$  1 to 7 mm  
0.2 kg



TH238-CX

TH238-CX127 Support for roller  
1 pin  
6-13 mm  $\varnothing$

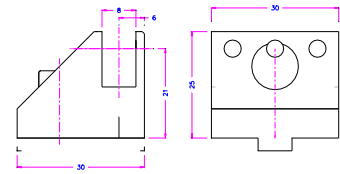
2x



TH238-CX127

TH238-CW Fixable supports for articulating carrier  
0.12 kg

2x



TH238-CWGT

TH238-CWEX Movable carrier for exchangeable roller  
with pins and O-rings to fix the roller  
0.003 kg

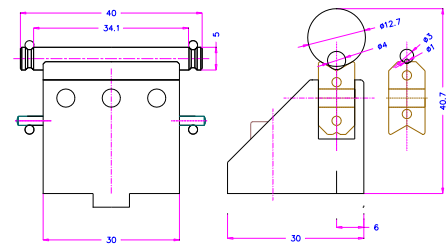
3x

4x



TH238-CWEX+D3x30 Articulating support with exchangeable roller  
0.2 kg

2x

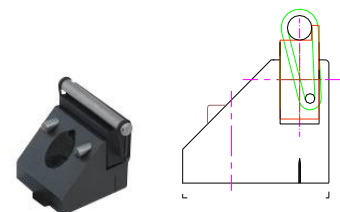


TH238-CWX5

TH238-CWX

TH238-CW+CWEX+D5x30 Movable carrier with exchangeable roller  
and 2 O-rings to fix the roller  
Roller 5 mm  $\varnothing$  on a flat plane area  
(3 mm height in stock)  
0.2 kg

2x

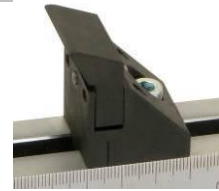


TH238-CW+CWER2x120 Special fixable movable insets  
Radius R2  
120 mm wide  
(not in stock)

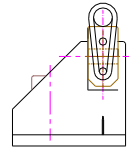
3x



TH238-  
CW+CWER1-VS6 Movable support  
Radius 1  
Zero span 2x



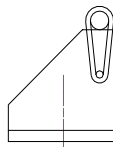
TH238-CW+CWEM Flat movable supports for glass 2x



TH238-CW+CWEL5 Movable inset rolling with needle  
bearings  
Roller diameter 5mm  
lighth width 12mm 2x



TH238-CM Flat free rolling support for glass 2x



TH238-D Rollers hardened 3x  
Ø 1-12.7 mm standard width 40mm  
D3x100 = 3 mm Ø and 100 mm length



TH238-DxL Roller of special length + 2 O-Rings + 2  
extra pins to keep O-ring 3x  
3x56; 3x105; 6x105; 10x105 mm  
( for chamber stainless steel spring )



**Upper anvils**

TH238-OR... Upper part anvil with milled radius 1,  
1.5; 2; 3; 4; 5; 12.5 mm 1x  
0.2 kg



TH238-OX Upper part anvil with milled V to carry  
different diameters 1x  
oX3 keeps 1-3.2 mm Ø  
oX12 keeps 4-12.7 mm Ø  
0.2 kg



TH238-OW Upper part for articulating carrier 1x  
Additional parts see TH238-W  
0.2 kg

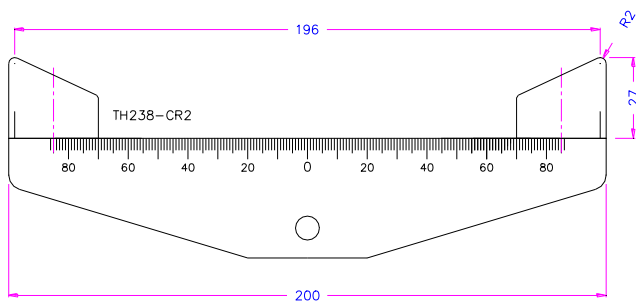
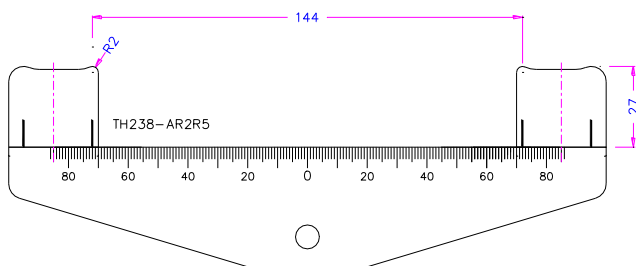
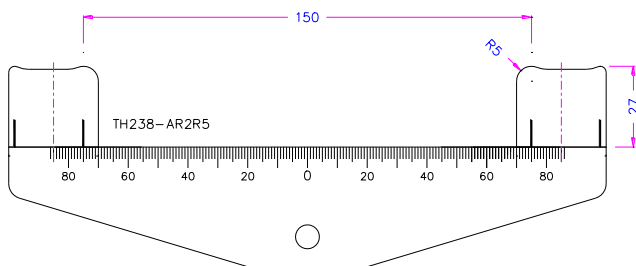


TH238-cWX

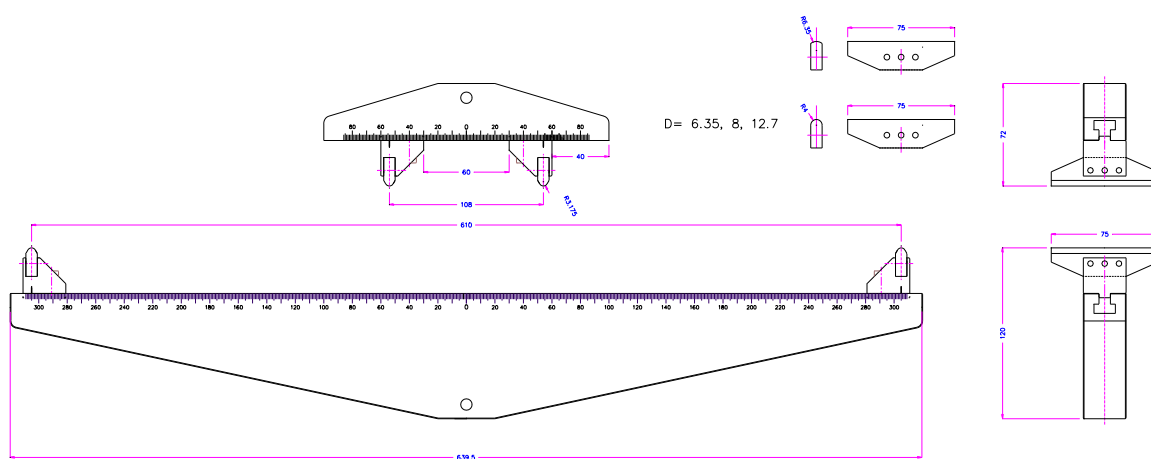
TH238-OW+cWEX+D8 Upper part + Movable anvil with prism and exchangeable roller 8mm diameter 1x  
0.1 kg



Possible span distances:



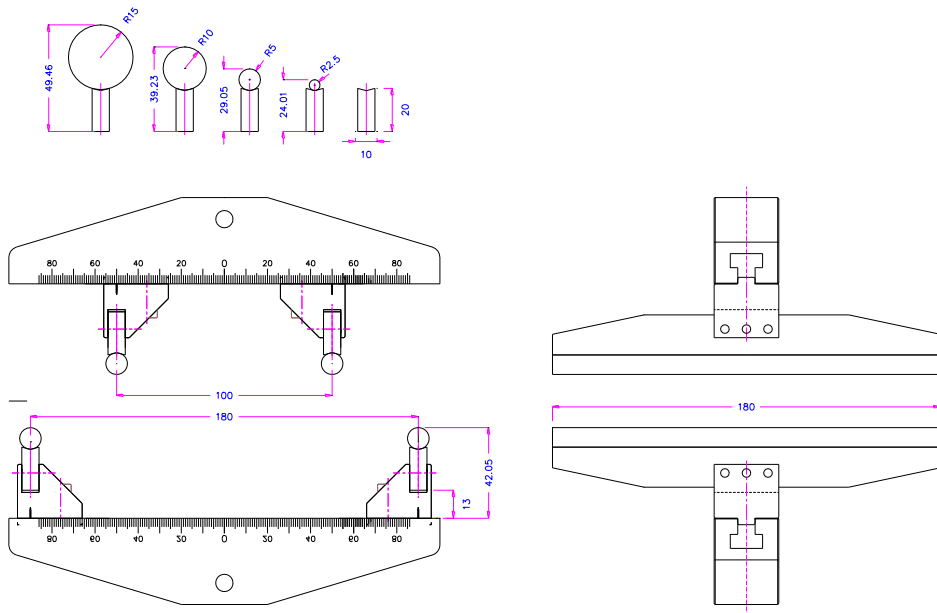
Examples:



TH238-4P-B640-B200-CWR635-8-127x75

Articulating carrier with radius 6.35 mm





TH238-4P-CWXdx180.....



TH238-B300--4P-CWR5x170



TH238-4P-CWXD8-iTH1-AfDP10s iTH1

With extensometer for chamber use

# TH238

TH238-4P-CWX15x180



TH238-CWXD4 iTH1

Holder for internal extensometer  
8 mm



# TH238

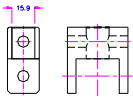
TH238-CWxD4-iTH2

Holder for external extensometer



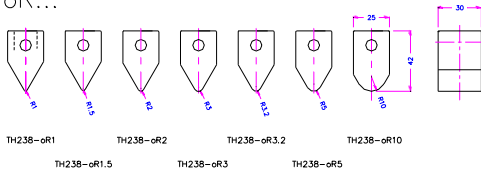
TH238-CR01

Radius 0.1 mm

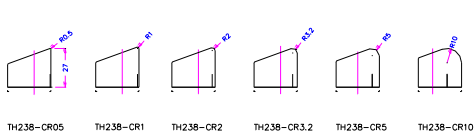


TH238-WDF-Af159

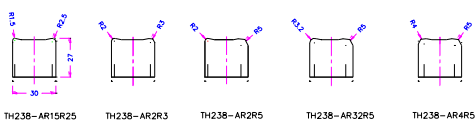
### oR...



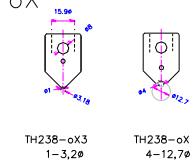
### C...



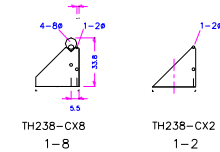
### A



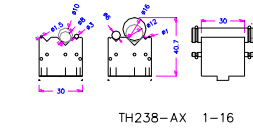
### oX



### CX



### AX

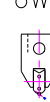


### oW



TH238-oW

### oW



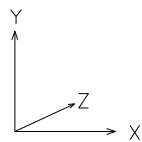
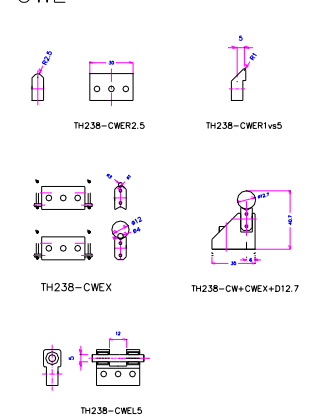
TH238-oW+CWEX+D2

### CW

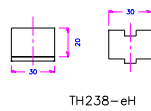


TH238-CW

### CWE

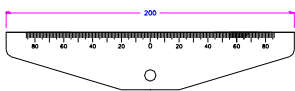
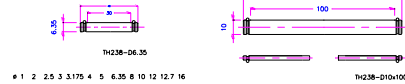


### eH



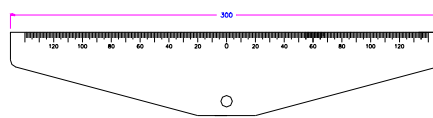
TH238-eH

### D..



TH238-200-Alu  
TH238-200-St Steel

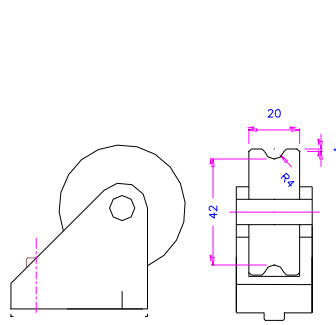
TH238-200



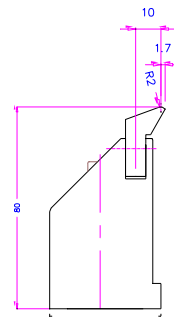
TH238-300

### Legende see also TH22

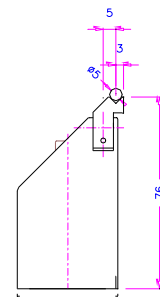
- o Auflager mit 2 Rollen support 2 rolls
- B Säulen St Säulen oben bar St = upper bar
- c Auflager mit einem Radius roller with radius
- D Wälze mit Durchmesser ... roller with diameter ...
- E Einsteck insert
- Gt Grundträger carrier
- H Höhe height
- L Rolle anbar um Z-Achse rotatable Z-axis
- M freie Rolle auf harter Platte free roller on a hard platen
- N freie Rolle mit Anschlag roller with 90° stop
- o oben top
- R Radius gehärtet radius milled
- W Wippe um X-Achse articulating X-axis
- X tauschbar exchangeable
- s Sonder special, not in stock



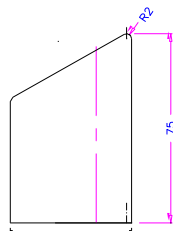
TH238-cVD42R4s



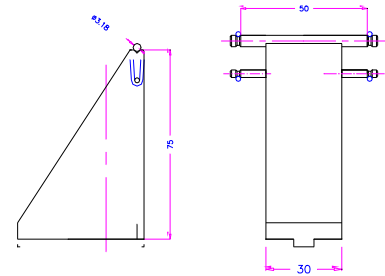
TH238-cWH80+cWER2vs10



TH238-cWH88+cWXVs5+D5

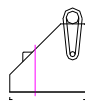


TH238-cR2H75



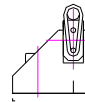
TH238-cXH75+D3.18x50

cM



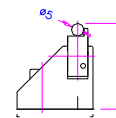
-cM

cWEM

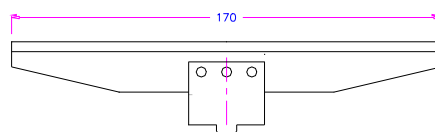
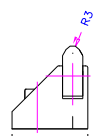


-cW+cWEM

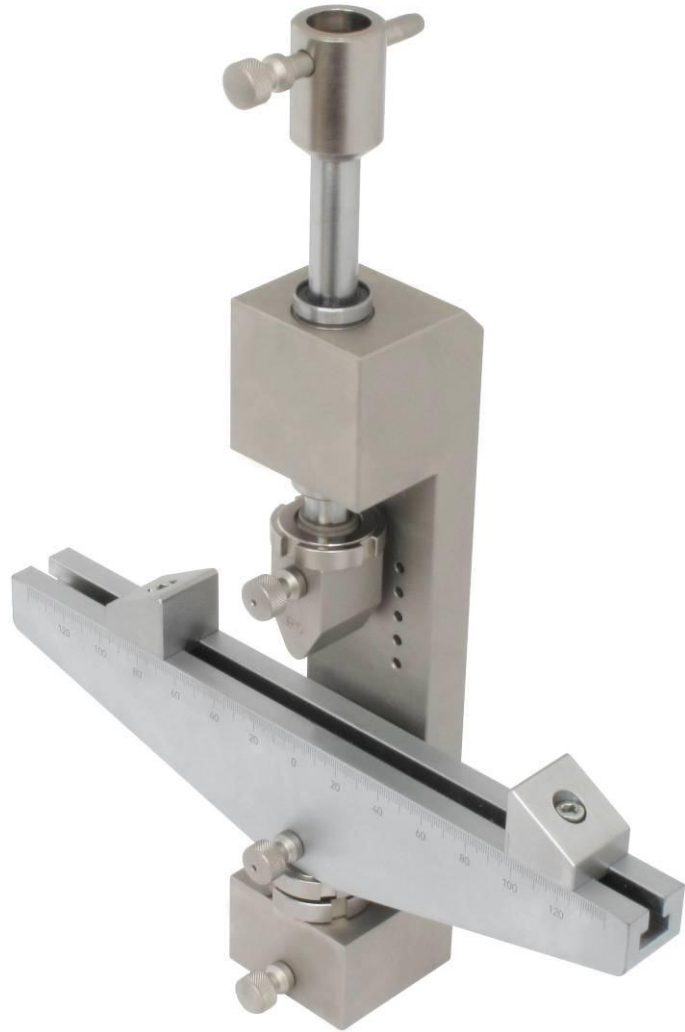
cWEN



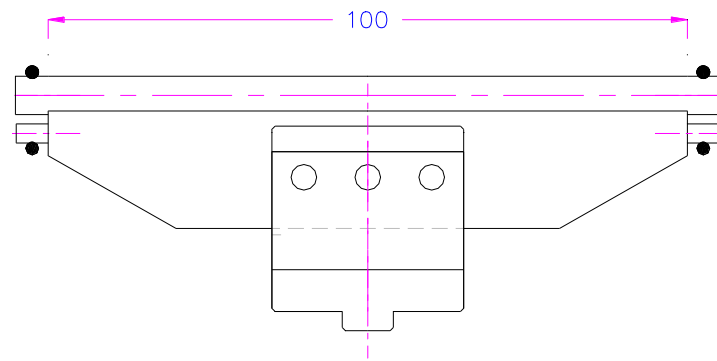
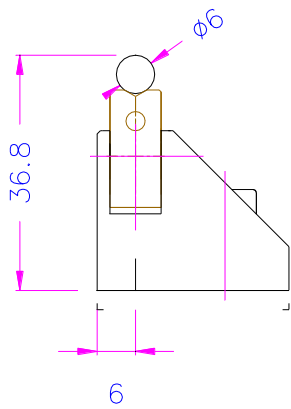
-cW+cWEN



TH238-cW+cWER3x170



**THS884+TH238-300-cr2-or5**



TH238-CWX6x100

<p>New special bending devices since 1.3.2016</p>	
	<p>TH238-FOR32-Af150</p>
	<p>TH238-200-ar2-H40-Af159-ans + or5-</p>



TH238+TH42-10-  
R3+Ans



TH238-3P-300-  
CXD20x76





TH238-CWD4-4p-  
WDFAM16-AM317



TH238-aX4.8.15-H50  
TH238-H50-AX

Extra Height





TH238-300-  
CX10x60-H100



TH238-CXF5x80



TH238-CX12

	TH238-CR10
	TH238-cr1.5

MT 14.1.2019